



PASCO EDC  
NORTH TAMPA BAY, FLORIDA

# PASCO ECONOMIC DEVELOPMENT COUNCIL



# Zephyrhills Economic Development Summit

October 19, 2022

START  
MOVE  
GROW

Your business here.

LET'S CONNECT NOW AT: (813) 926-0827

PASCO ECONOMIC DEVELOPMENT COUNCIL  
16506 Pointe Village Drive, Suite 101 | Lutz, FL 33558

[www.PascoEDC.com](http://www.PascoEDC.com)



- **Pasco Economic Development Council**

- 501 (c) 3 non-profit corporation
- Public-Private Partnership
- Incorporated in 1987



**Pasco EDC Mission**

To stimulate balanced and diversified business growth

**Pasco EDC Vision**

To be known as Florida's most competitive climate for business growth



## How Pasco EDC Can Help

- Site Location Assistance
- Workforce Assistance
- Exporting Assistance
- Expansion Assistance
- Community Data
- Community Resource Liaison
- SmartLandings (International Assistance)
- Entrepreneurship Assistance



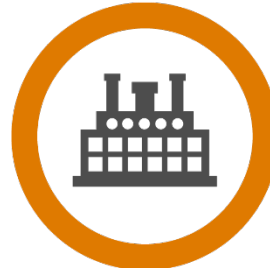


- **Since 1995, Pasco EDC has helped 640 companies:**
  - Expand over 7.4 million new sqft
  - Create 16,000 new jobs
  - Invest \$2.2 billion



PASCO EDC  
NORTH TAMPA BAY, FLORIDA

# PASCO EDC TARGET INDUSTRIES



Advanced  
Manufacturing



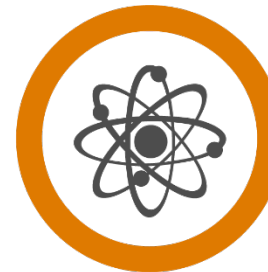
Aerospace,  
Aviation, &  
Defense



Business &  
Professional  
Services



High  
Technology



Life Sciences &  
Medical  
Technology



Logistics &  
Distribution





- Award-winning [workforceCONNECTpasco.com](http://workforceCONNECTpasco.com) platform
- Allows employers to find programs that produce talent that will thrive in their industries and explore resources
- Allows job seekers to discover and explore various career pathways
- Local government officials play an important role in workforceCONNECT, funded by the Penny for Pasco

1

### HIRING

Whether you are searching for entry-level or experienced talent Pasco County has a robust workforce to meet all your needs. Explore our directory of training partners to find the perfect fit to recruit fresh graduates or download our guides on best practices when searching for more experienced talent.

2

### LABOR MARKET DATA

Pasco is one of the fastest-growing counties in the United States and sometimes it is hard to find current data that reflects our growth. From average wages to drive time analyses and much more, we can help you make informed decisions when looking to grow your workforce.

3

### INTERNSHIPS

Looking to create a learning opportunity for local students, or set up an apprenticeship program for your specialized manufacturing positions? We can help build your program from building your curriculum to writing your advertisement and connect you with a local partner to see your program through to success.

4

### TRAINING GRANTS

Pasco County has a great selection of training providers that teach relevant and current workforce skills to your future employees. Best of all, your new and existing employees may be eligible for grants that will reimburse you for the cost of most training.



- **WorkforceCONNECT funded through Penny for Pasco**
- **Partnership with Pasco County Board of County Commissioners**
- **Penny for Pasco**
  - 1 cent sales tax approved by voters 2014
  - Portion for Economic Development (\$56 Million)





## Pasco County

- **Population of over 570,000 and workforce of nearly 240,000 (42%)**
  - 50 people move to Pasco County each day
- **Over 35,000 new jobs in the next 10 years, with at least half coming from our targeted industries**

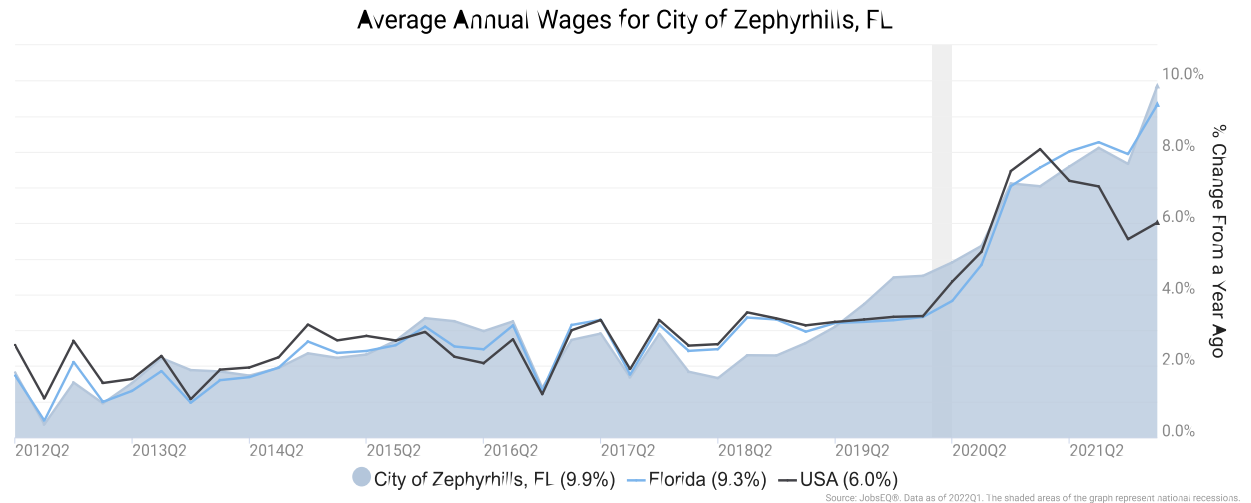




# WORKFORCE TRENDS

## ZEPHYRHILLS WORKFORCE TRENDS

- **Population of over 16,000 with 5,600 (41.1%) in the workforce**
- **Population in Greater Zephyrhills is 125,000, and 52,000 (50.1%) in the workforce**
- **From 2021 to 2022, overall employment increased 5.2%**
- **Almost 10% increase in wages over the past year**



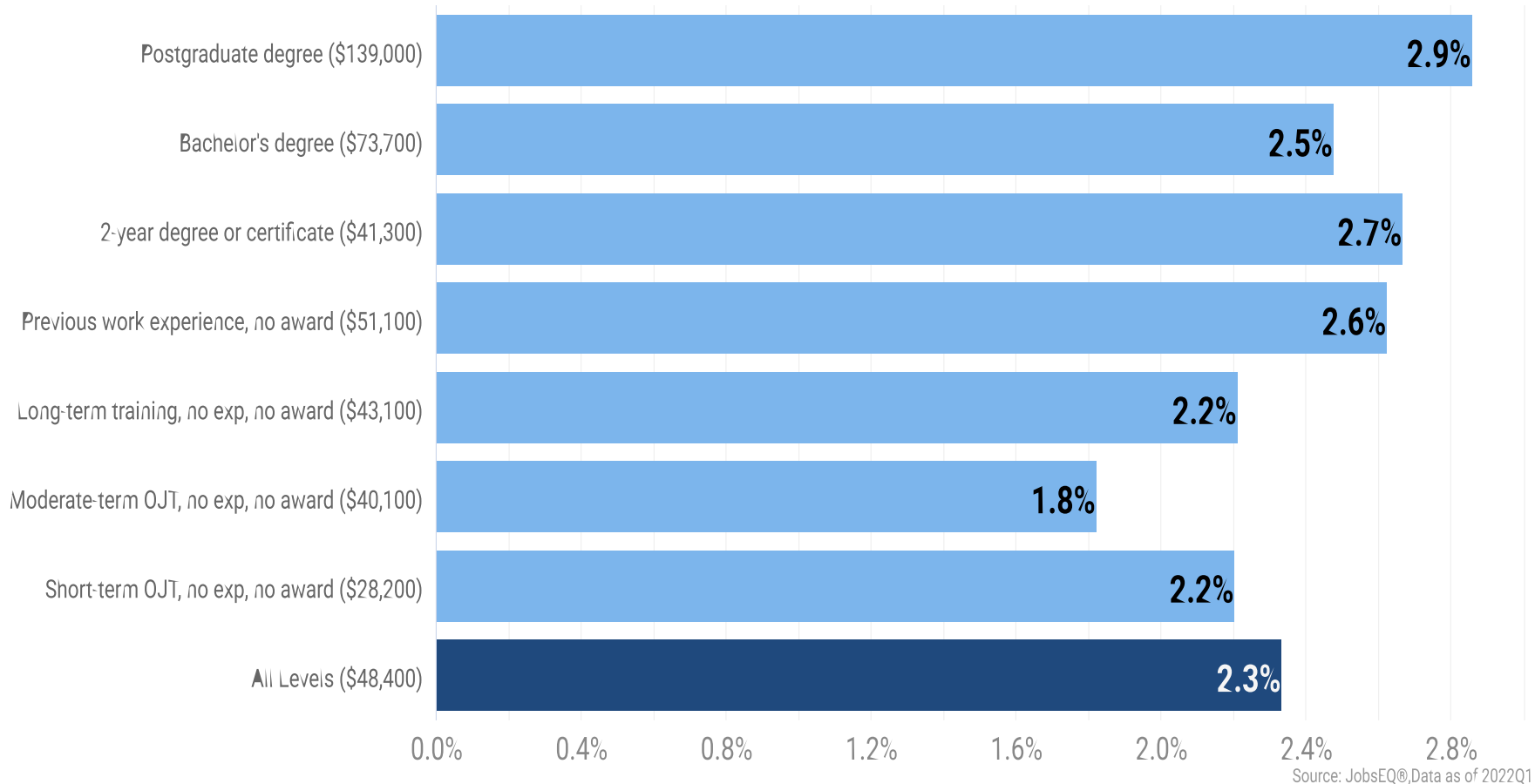
## TOP OCCUPATIONS, CITY OF ZEPHYRHILLS, FL

|  | EMPLOYMENT | AVG WAGE | GROWTH |
|--|------------|----------|--------|
| Office and Administrative Support Occupations              | 820        | \$37,000 | 1.5%   |
| Food Preparation and Serving Related Occupations           | 678        | \$26,100 | 3.5%   |
| Healthcare Practitioners and Technical Occupations         | 639        | \$83,300 | 2.7%   |
| Sales and Related Occupations                              | 595        | \$36,700 | 1.3%   |
| Transportation and Material Moving Occupations             | 429        | \$32,800 | 2.2%   |
| Healthcare Support Occupations                             | 378        | \$30,300 | 3.3%   |
| Management Occupations                                     | 343        | \$99,000 | 2.6%   |
| Educational Instruction and Library Occupations            | 310        | \$49,000 | 2.4%   |
| Production Occupations                                     | 294        | \$36,400 | 1.3%   |
| Construction and Extraction Occupations                    | 280        | \$41,300 | 2.0%   |
| Installation, Maintenance, and Repair Occupations          | 275        | \$43,600 | 2.1%   |
| Business and Financial Operations Occupations              | 243        | \$68,500 | 2.3%   |
| Building and Grounds Cleaning and Maintenance Occupations  | 205        | \$28,300 | 2.3%   |
| Personal Care and Service Occupations                      | 144        | \$29,500 | 3.3%   |
| Protective Services Occupations                            | 119        | \$48,900 | 2.5%   |
| Computer and Mathematical Occupations                      | 95         | \$80,900 | 2.4%   |
| Community and Social Service Occupations                   | 94         | \$44,800 | 2.8%   |
| Arts, Design, Entertainment, Sports, and Media Occupations | 75         | \$50,800 | 2.3%   |
| Architecture and Engineering Occupations                   | 39         | \$75,600 | 2.1%   |
| Farming, Fishing, and Forestry Occupations                 | 38         | \$29,200 | 1.6%   |
| Life, Physical, and Social Science Occupations             | 29         | \$65,400 | 2.4%   |
| Legal Occupations  | 26         | \$93,900 | 2.3%   |
| Total - All Occupations                                    | 6,149      | \$46,500 | 2.3%   |





### Annual Average Projected Job Growth by Training Required





- **Pasco County Schools**

- One of the largest employers
- School Choice
- Career Pathways/Programs
  - “Career Pathways are unique schools-within-schools that offer a diverse learning curriculum that focuses on helping students develop dynamic skillsets that lead to high-paying careers.”

- **Zephyrhills High School**

- Career Pathways:
  - Agriculture, Food, and Natural Resources
  - Arts, AV Technology, & Communication
  - Education and Training
  - Health Science
  - Law, Public Safety, & Security



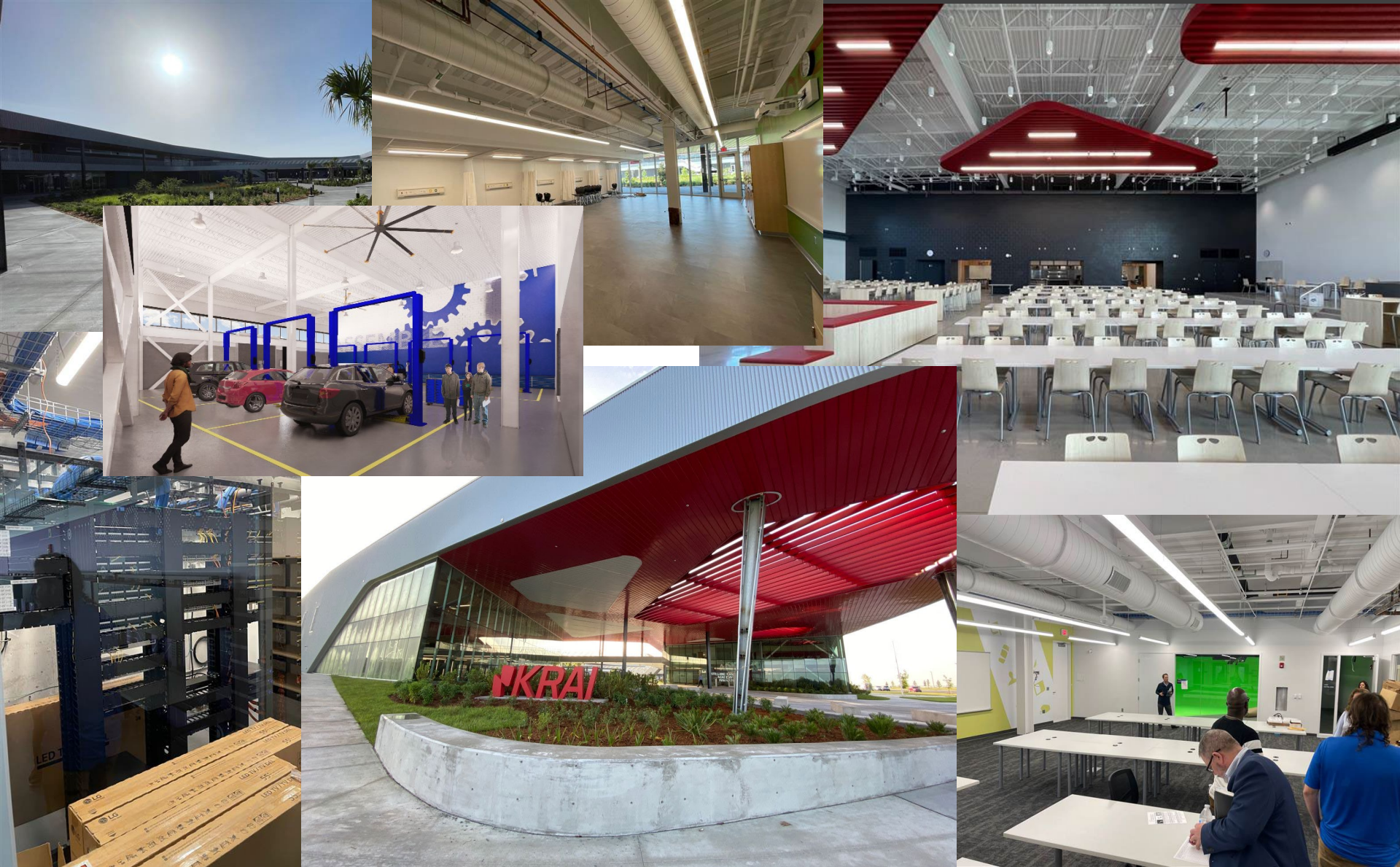
- **Kirkland Ranch Academy of Innovation**
  - 9100 Curley Rd, Wesley Chapel, FL 33545
  - Opened in 2022 for 9<sup>th</sup> and 10<sup>th</sup> graders
  - 10 in-demand programs:
    - Applied Cybersecurity
    - Computer Science
    - Automotive Maintenance & Light Repair
    - Biomedical Sciences
    - Building Trades – Construction Technology
    - Diesel Maintenance Technology
    - Digital Media/Multimedia
    - Electricity
    - Engineering & Applied Robotics
    - Patient Care Technology
    - Welding Technology



PASCO EDC  
NORTH TAMPA BAY, FLORIDA

# WORKFORCE INITIATIVES

## KIRKLAND RANCH ACADEMY OF INNOVATION





- **Ready Sites**

- Assesses, evaluates, and certifies large tracts of land to prepare properties for industrial development, marketed nationally

- **Zephyrhills Airport Industrial Park**

- Manufacturing, Distribution, Defense/Aviation





PASCO EDC  
NORTH TAMPA BAY, FLORIDA

# WORKFORCE INITIATIVES

WORKFORCE VIDEO







PASCO EDC  
NORTH TAMPA BAY, FLORIDA

FOR MORE INFORMATION

[CONTACT US](#)

**QUESTIONS?**



Experience working with people who value your business and are committed to its success.

Contact:

**Turner Arbour**

*Senior Economic*

*Development Manager*

tarbour@pascoedc.com

Contact:

**Sarah Alway**

*Workforce Development*

*Coordinator*

salway@pascoedc.com